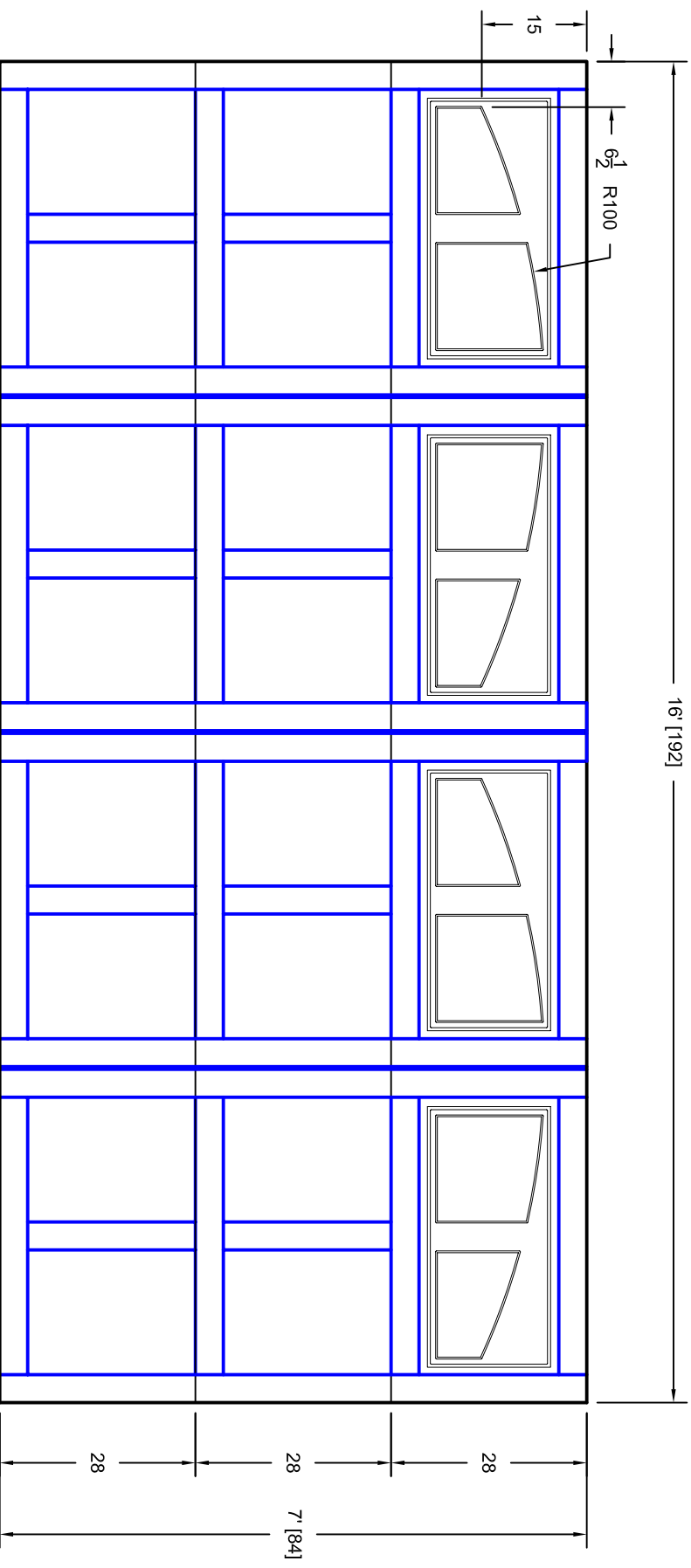




- Note:
1. Overlay board material: Steel.
 2. Arch material: Molded Polyurethane
 3. Overlay board width: 4 inches.
 4. Customer responsible to verify all field dimensions.



CUSTOMER APPROVAL REQUIRED FOR MANUFACTURING

X _____

DRAWN BY	E Gebhard 01-05-05	TITLE	Andover w / Madison Arch Door Lites		
CHECKED			A10 16' X 7'		
DATE		SIZE	A		
APPD		SCALE	A		
DATE		WT. ACT.	7A167010		
APPD		SHEET	A		
DATE					
DATE					
DATE					

Unless Otherwise Specified		
Dimensions are in Inches		
Fractions	Decimals	Angles
+/- 1/16	X.X +/- .03	+/- 0.5
	X.XX +/- .01	
	X.XXX +/- .005	

		7255 S. KYRENE
		SUITE #104
		TEMPE, AZ 85283
		480-705-6632
		480-705-8497 fax
		www.firstudt.com