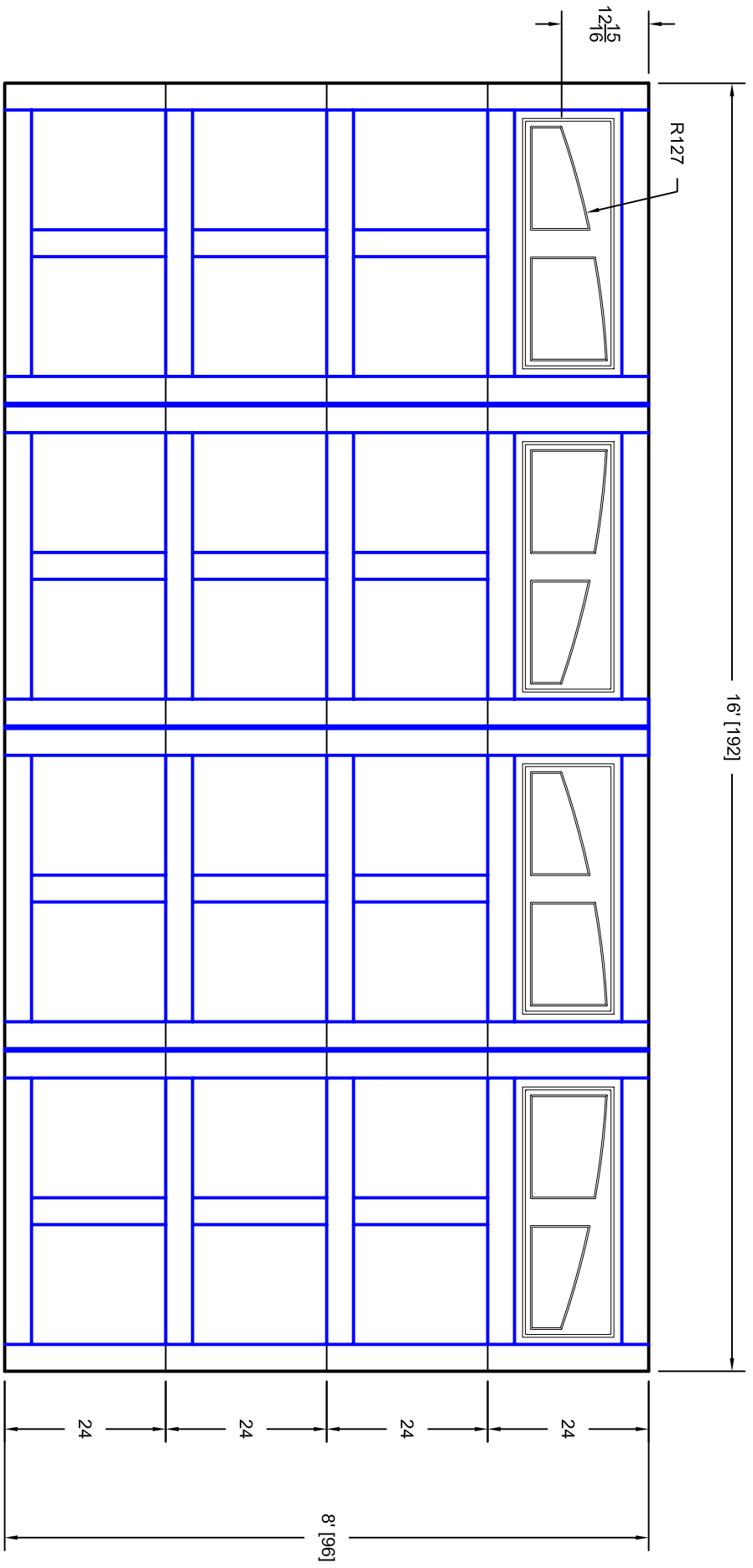




- Note:
1. Overlay board material: Steel.
 2. Arch material: Molded Polyurethane
 3. Overlay board width: 4 inches.
 4. Customer responsible to verify all field dimensions.



CUSTOMER APPROVAL REQUIRED FOR MANUFACTURING

X _____

DRAWN BY	E Gebhard 03-30-05	TITLE	Andover w / Madison Arch Insert A10		
DATE		SIZE	16' X 8'		
CHECKED		SCALE	A		
DATE		WT. ACT.	7A168010		
APPD		SHEET	A		
DATE		REV	A		
APPD		Unless Otherwise Specified	Dimensions are in Inches		
DATE		Fractions	X.X +/- .03		
APPD		Decimals	X.XXX +/- .01		
DATE		Angles	+/- 0.5		
APPD		Tolerance on	X.XXX +/- .005		
DATE					



7255 S. KYRENE
 SUITE #104
 TEMPE, AZ 85283
 480-705-6632
 480-705-8497 fax
 www.firstudt.com