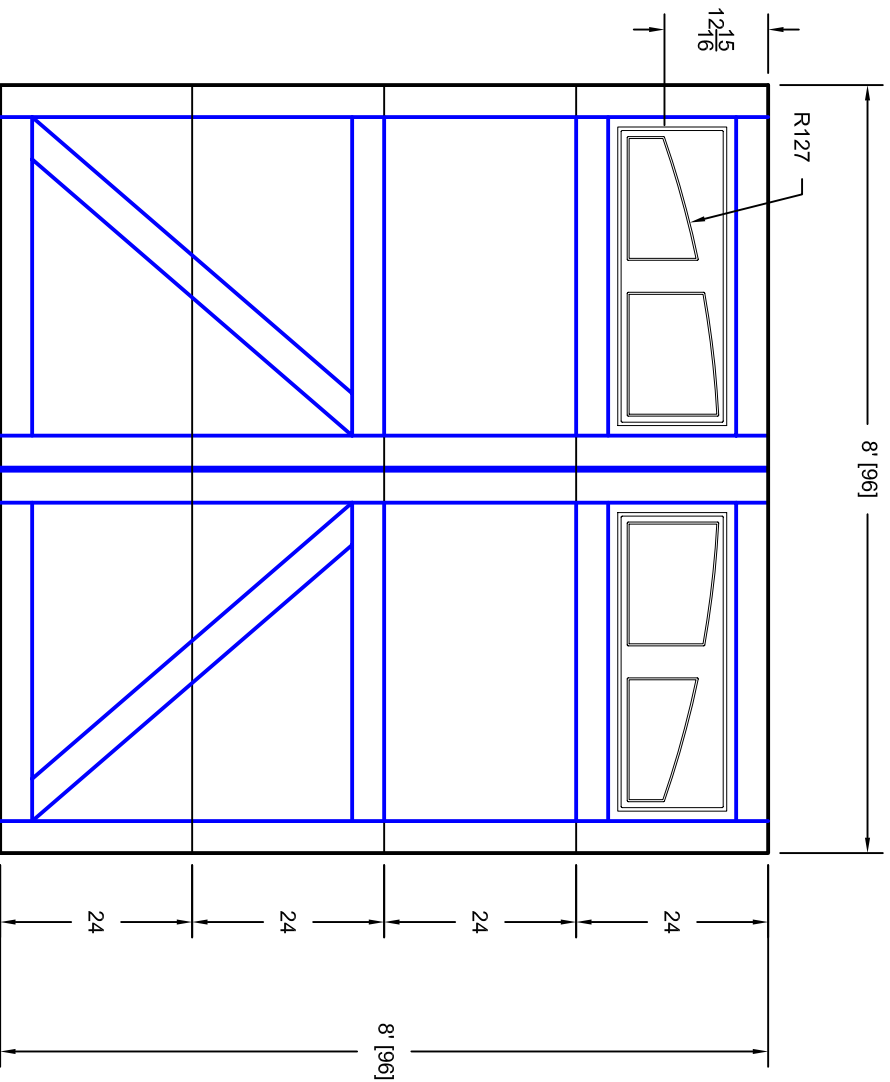


- Note:
1. Overlay board material: Steel.
  2. Arch material: Molded Polyurethane
  3. Overlay board width: 4 inches.
  4. Customer responsible to verify all field dimensions.



|          |                    |
|----------|--------------------|
| DRAWN BY | E Gebhard 04-04-06 |
| CHECKED  |                    |
| DATE     |                    |
| APPD     |                    |
| DATE     |                    |
| APPD     |                    |
| DATE     |                    |

|       |                                      |          |  |
|-------|--------------------------------------|----------|--|
| TITLE | Bradford w / Madison Arch Insert B10 |          |  |
| SIZE  | 8' X 8'                              |          |  |
| SCALE | A                                    | WT. ACT. |  |
| REV   | A                                    | SHEET    |  |
|       | 7B088010                             |          |  |

Unless Otherwise Specified  
Dimensions are in Inches

|           |               |         |
|-----------|---------------|---------|
| Fractions | Decimals      | Angles  |
| +/- 1/16  | XX +/- .03    | +/- 0.5 |
|           | XXX +/- .01   |         |
|           | XXXX +/- .005 |         |



CUSTOMER APPROVAL REQUIRED FOR  
MANUFACTURING

X \_\_\_\_\_

7255 S. KYRENE  
SUITE #104  
TEMPE, AZ 85283  
480-705-6632  
480-705-8497 fax  
www.firstudt.com