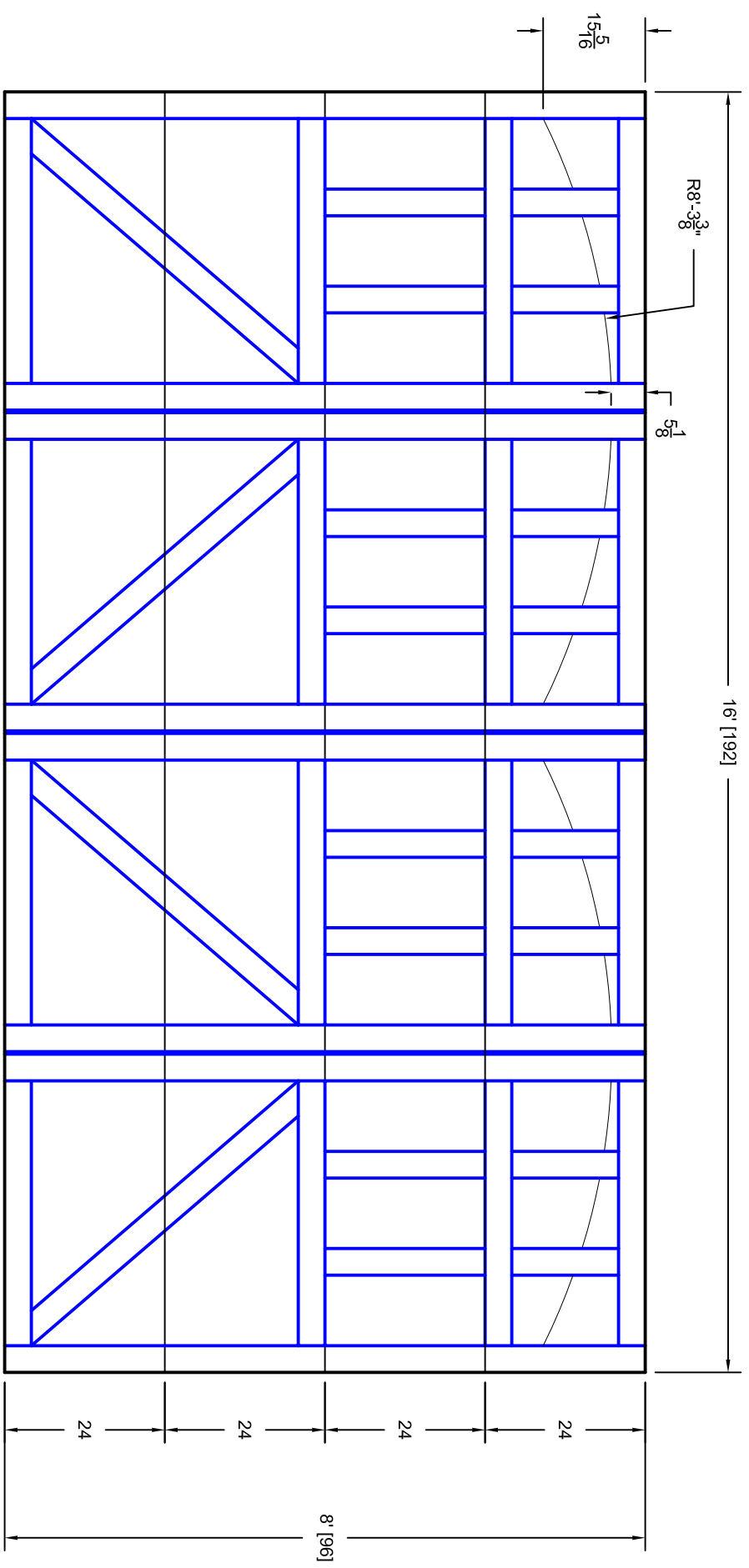




- Note:
1. Overlay board material: Steel.
  2. Arch material: Molded Polyurethane
  3. Overlay board width: 4 inches.
  4. Customer responsible to verify all field dimensions.



CUSTOMER APPROVAL REQUIRED FOR MANUFACTURING

X \_\_\_\_\_

DRAWN BY	E Gebhard 04-14-06	TITLE	Bradford w / Colonial Solid Arch B13		
CHECKED		SIZE	16' X 8'		
DATE		SCALE	A		
APPD		WT. ACT.	7B168013		
DATE		SHEET	A		
APPD		REV	A		
DATE		Unless Otherwise Specified	Dimensions are in Inches		
DATE		Tolerance on	Fractions	Decimals	Angles
DATE			+/- 1/16	X.X +/- .03	+/- 0.5
DATE			X.XXX +/- .01		
DATE			X.XXX +/- .005		
				<b>7255 S. KYRENE</b> <b>SUITE #104</b> <b>TEMPE, AZ 85283</b> <b>480-705-6632</b> <b>480-705-8497 fax</b> <b>www.firststudt.com</b>	